

# COMUNE DI GRUARO

---

## PIANO GENERALE DEGLI IMPIANTI PUBBLICITARI

Norme in deroga all'art. 23 del Nuovo Codice della Strada, D. Lgs. 30 aprile 1992 n. 285, testo aggiornato con il D.Lgs. 10 settembre 1993 n. 360 in vigore dal 1 ottobre 1993 integrato con il Regolamento di attuazione e di esecuzione D.PR. 16 dicembre 1992 n. 495, aggiornato con il D.PR. 16 settembre 1996 n. 610.


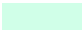
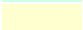


---

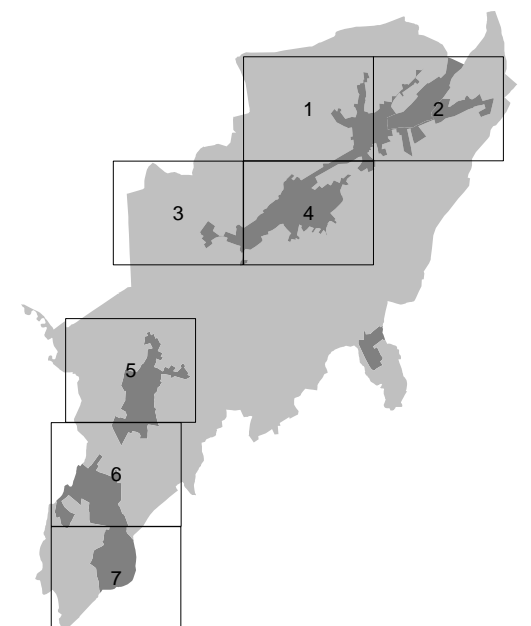
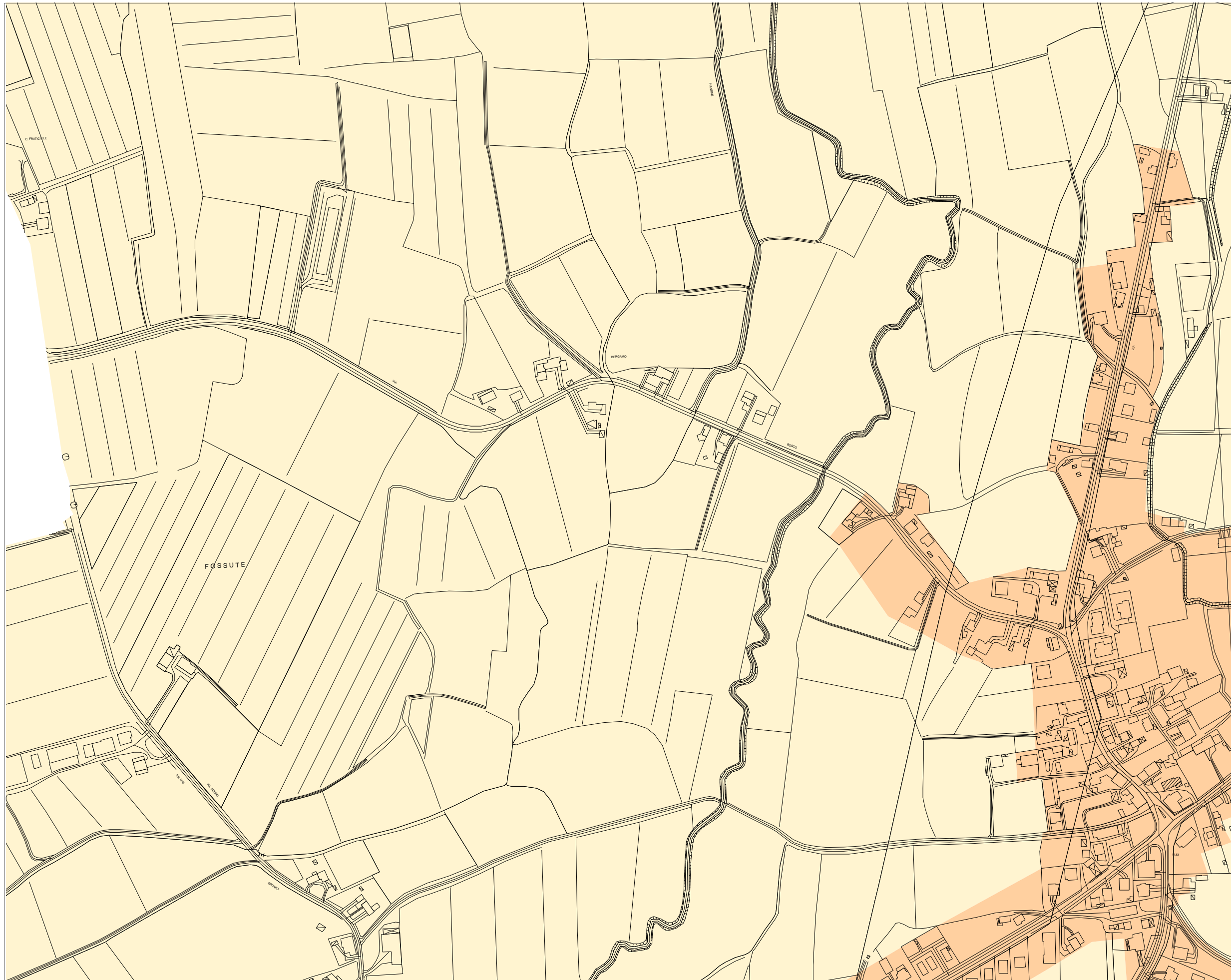
## ZONIZZAZIONE DEL TERRITORIO COMUNALE CARTOGRAFIA

# COMUNE DI GRUARO

Piano generale degli impianti  
pubblicitari

Macrozonizzazione  
Tavola 1

-  Zona A1
-  Zona A2
-  Zona B Esterna centri abitati
-  Perimetro centri abitati
-  Perimetro territorio comunale



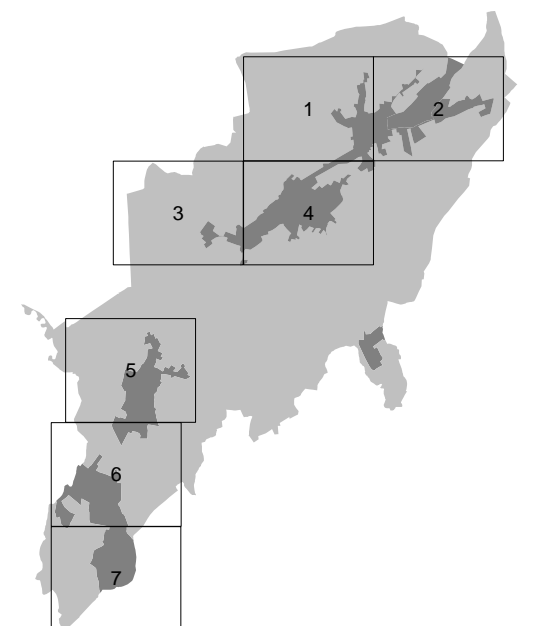
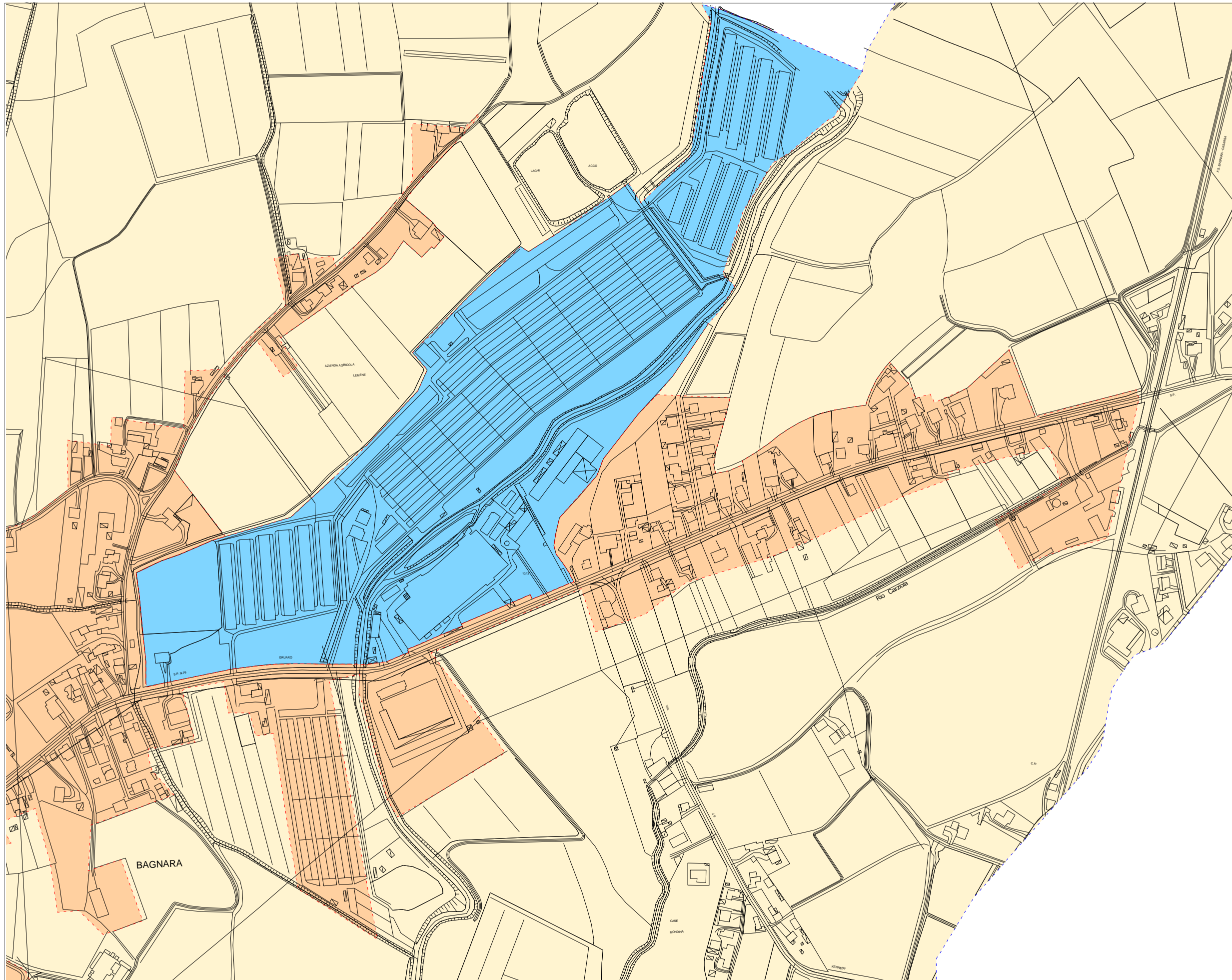


# COMUNE DI GRUARO

Piano generale degli impianti pubblicitari  
pubblicitari

Macrozonizzazione  
Tavola 2

- Zona A1
- Zona A2
- Zona B Esterna centri abitati
- Perimetro centri abitati
- Perimetro territorio comunale

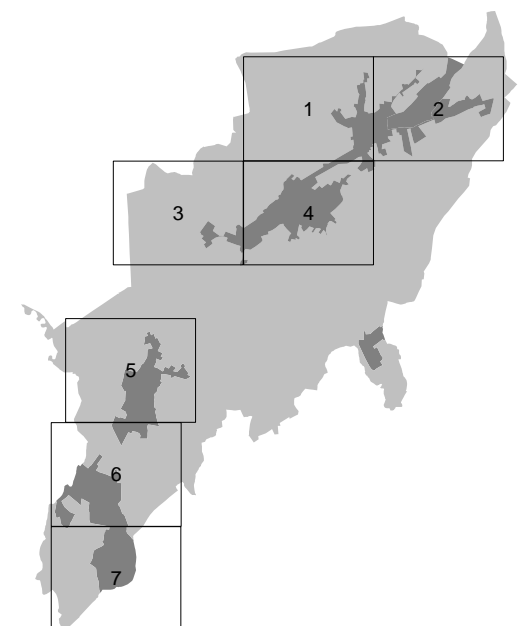
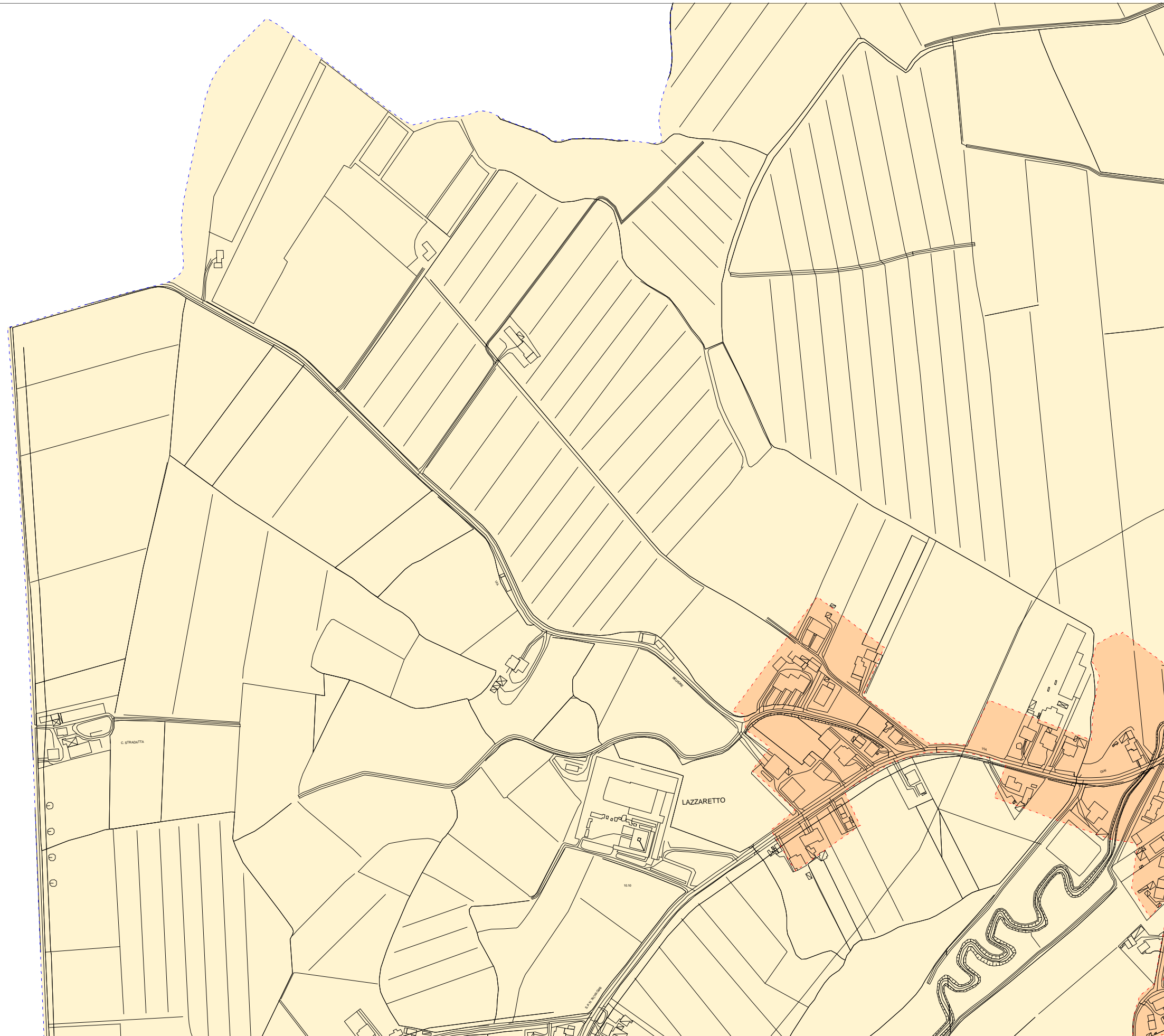


# COMUNE DI GRUARO

Piano generale degli impianti pubblicitari  
pubblicitari

Macrozonizzazione  
Tavola 3

- Zona A1
- Zona A2
- Zona B Esterna centri abitati
- Perimetro centri abitati
- Perimetro territorio comunale


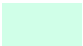
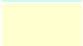
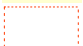



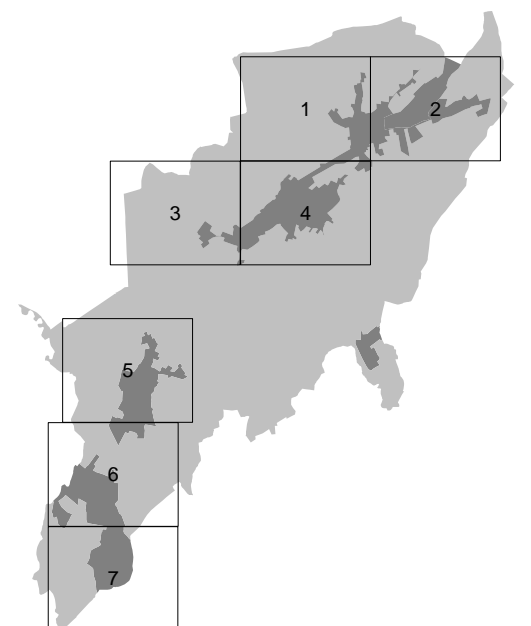
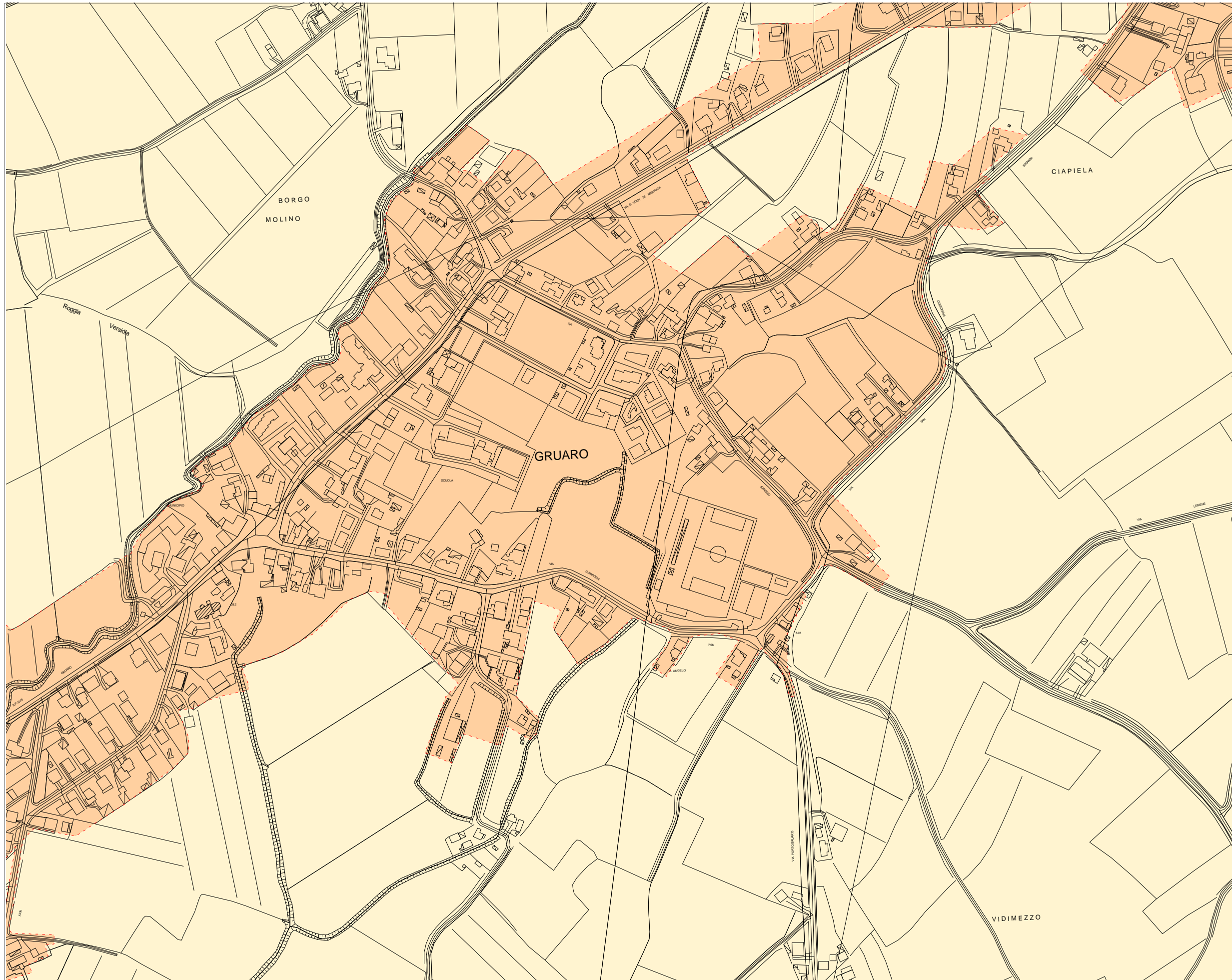


# COMUNE DI GRUARO

Piano generale degli impianti pubblicitari

Macrozonizzazione  
Tavola 4

-  Zona A1
-  Zona A2
-  Zona B Esterna centri abitati
-  Perimetro centri abitati
-  Perimetro territorio comunale


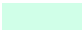
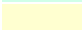




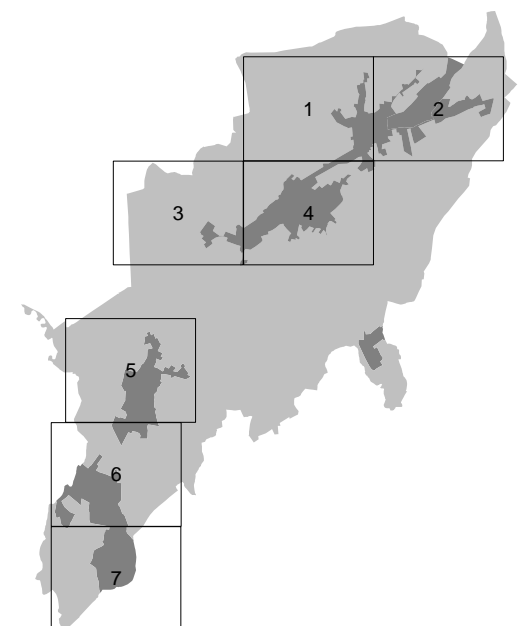
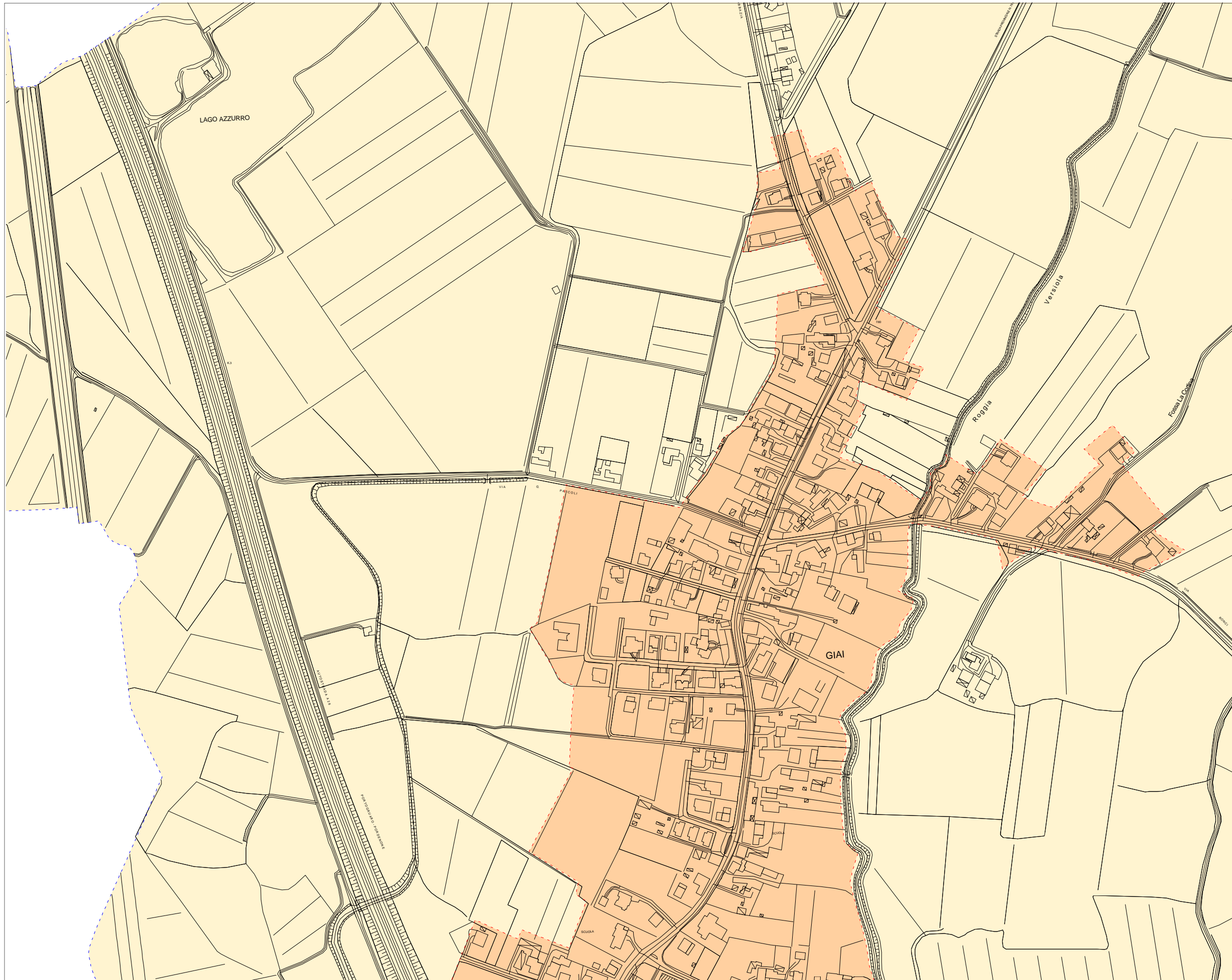


# COMUNE DI GRUARO

Piano generale degli impianti pubblicitari

Macrozonizzazione  
Tavola 5

-  Zona A1
-  Zona A2
-  Zona B Esterna centri abitati
-  Perimetro centri abitati
-  Perimetro territorio comunale



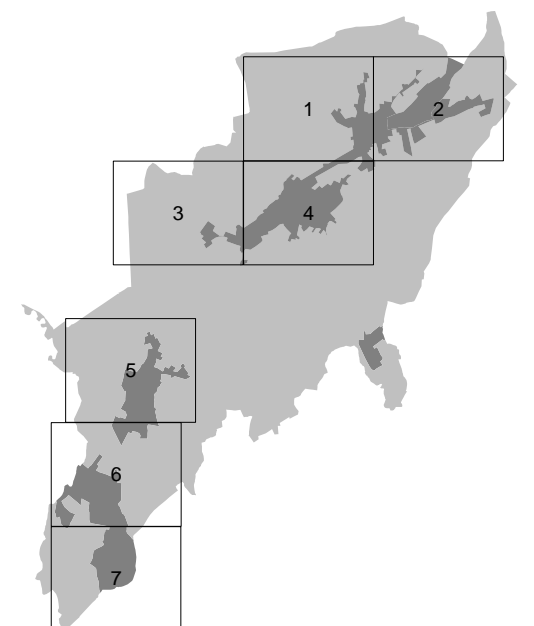
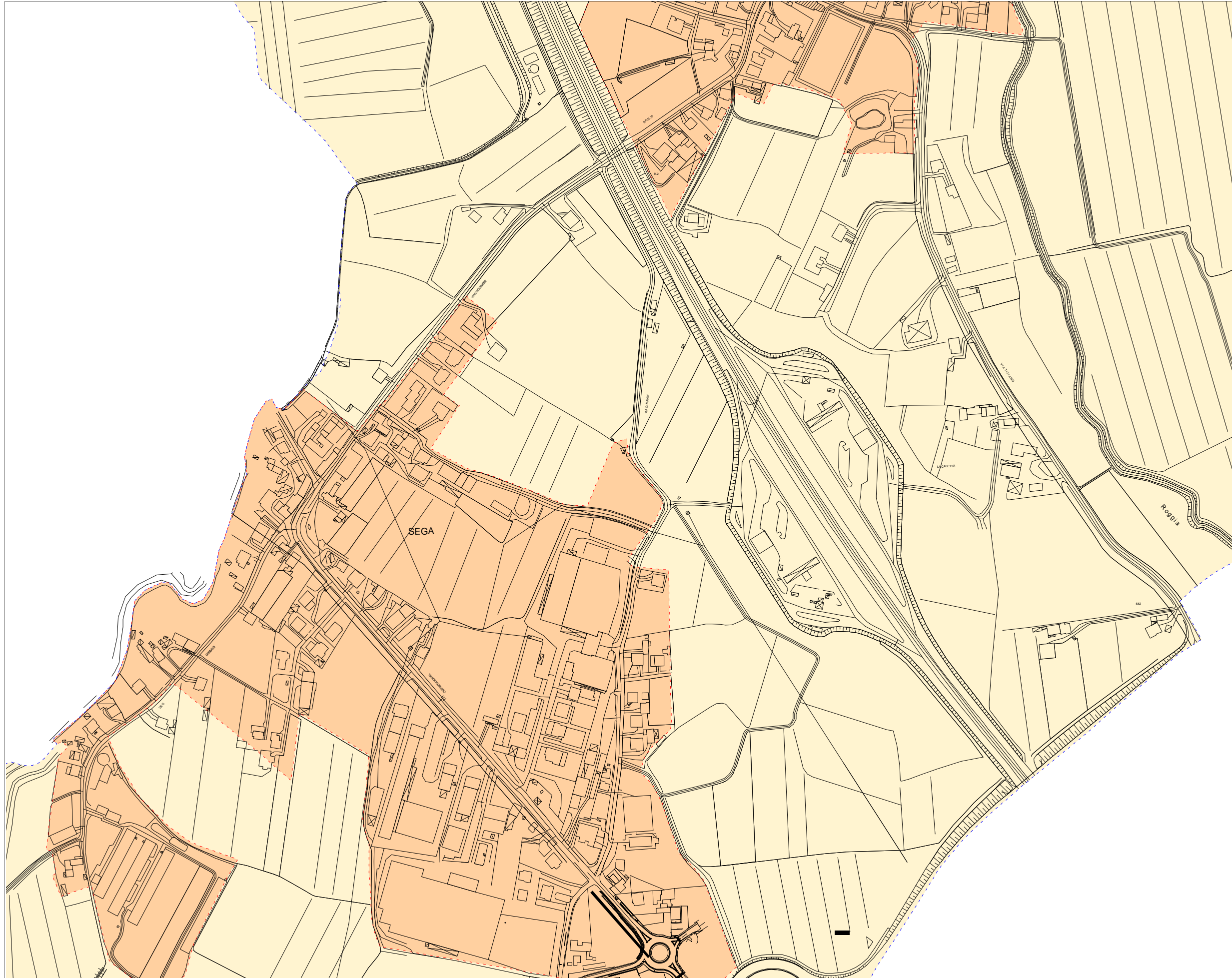


# COMUNE DI GRUARO

Piano generale degli impianti pubblicitari  
pubblicitari

Macrozonizzazione  
Tavola 6


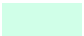
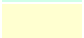
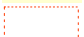

- Zona A1
- Zona A2
- Zona B Esterna centri abitati
- Perimetro centri abitati
- Perimetro territorio comunale



# COMUNE DI GRUARO

Piano generale degli impianti pubblicitari

Macrozonizzazione  
Tavola 7

-  Zona A1
-  Zona A2
-  Zona B Esterna centri abitati
-  Perimetro centri abitati
-  Perimetro territorio comunale

